

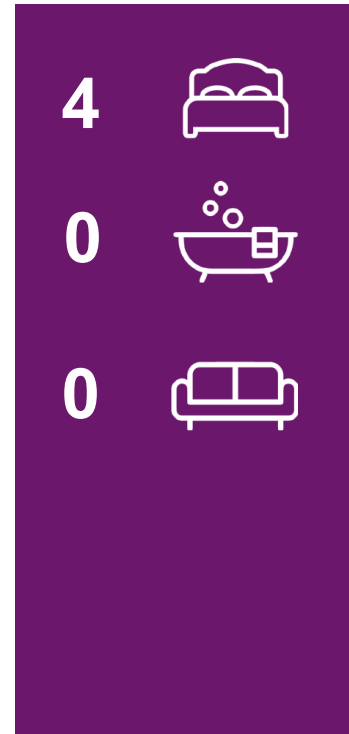
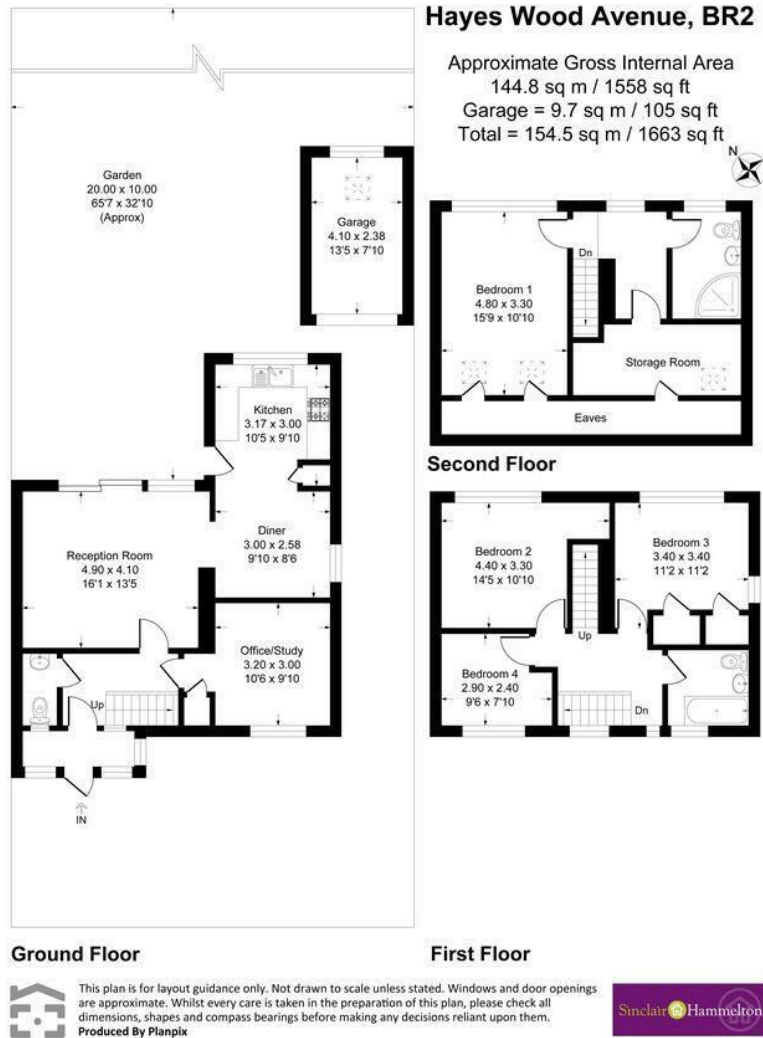


£825,000

Hayes Wood Avenue

, BR2 7BJ

EPC RATING: C COUNCIL TAX BAND: E



Energy Efficiency Rating		Current	Potential
Very energy efficient - lower running costs			
(92 plus)	A		
(81-91)	B		
(69-80)	C		
(55-68)	D	69	79
(39-54)	E		
(21-38)	F		
(1-20)	G		
Not energy efficient - higher running costs			
England & Wales		EU Directive 2002/91/EC	

Agents Note: Whilst every care has been taken to prepare these particulars, they are for guidance purposes only. All measurements are approximate and are for general guidance purposes only and whilst every care has been taken to ensure their accuracy, they should not be relied upon and potential buyers/tenants are advised to recheck the measurements



OFFICE ADDRESS

3a Station Approach
 Hayes
 Kent
 BR2 7EQ

OFFICE DETAILS

020 8462 0360
 infohy@sinclairhammelton.co.uk